

STRESSLESS® MAX AND MIKE

IT'S TIME FOR

Stressless®





Stressless® Mike
Pioneer Grey
Moon base Steel





Introducing Stressless® Max and Mike.

Personal Comfort at its Finest.

Stressless® is now available with new patented and innovative technology allowing unlimited and unique control for you to reach your favorite comfort position. Stressless® Max and Mike motorized recliners provide a beautiful, sophisticated, slim and compact style compared to most chairs that do less but take up more space. With the touch of one master control button, you can adjust back, leg, lumbar and head support in one synchronized movement. Or you can make independent adjustments for that just-right spot that feels best to you.

Lumbar support is automatically adjusted when you change the position of the back rest, so your lower back is always supported ergonomically. In the true spirit of Stressless® innovations, Stressless® Max and Mike come complete with the patented Stressless® Plus™-system and equipped with unique Comfort Zones in the seat and back. You will feel the difference between Stressless® Max and Mike vs. the competition immediately!

Stressless® Max and Mike feature a stabilizing and elegantly crafted disc-shaped moon base, available in brushed steel or beech in all 8 Stressless® stain colors. Both are available in small, medium and large sizes.



Stressless® Max.

When was the last time you felt truly calm? Allow yourself to put your feet up and lean back. Stressless® Max is designed and built for an even more individual experience of comfort, with state of the art technology underneath the supple, voluminous shapes. Experience the soft and calming rocking motions that offers instant comfort as you sit down. Its casual, generous look makes it a timeless addition to your home.



Soothing motions

The soothing rocking in Stressless® Max offers an instant calm feeling as you sit down and is easily activated by slightly pushing your feet to the floor. Rocking motion deactivates when the footrest is out.



Adjust with full support

The integrated Plus™-system supports your neck and lumbar region, regardless of whether you're sitting or lying down. The long and slender footrest can be adjusted individually to your preferred angle.



Adjust for rest or activity

The positioning of the head rest is individually adjustable for perfect support, whether you want to lay flat for a total rest, read, watch a screen or converse with those around you.



Stressless® Max
Paloma Copper
Moon base Walnut





Stressless® Mike
Pioneer Grey
Moon base Steel



Stressless® Mike
Paloma Rock
Moon base Steel



Stressless® Mike.

Allow yourself to put your feet up, enjoy the comfortable rocking motions and just breathe. Stressless® Mike has rounded shapes and details that enhances the soft lines of the clean and contemporary cushion design. Underneath it all lies functionality that assists you in finding the prime position for savoring some well-deserved me-time.



Soothing motions

The soothing rocking in Stressless® Mike offers an instant calm feeling as you sit down and is easily activated by slightly pushing your feet to the floor. Rocking motion deactivates when the footrest is out.



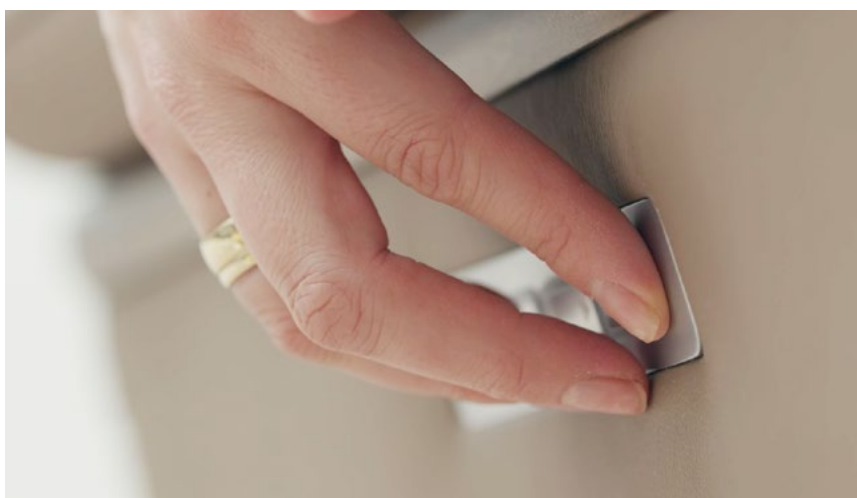
Adjust with full support

The integrated Plus™-system supports your neck and lumbar region, regardless of whether you're sitting or lying down. The long and slender footrest can be adjusted individually to your preferred angle.



Adjust for rest or activity

The positioning of the head rest is individually adjustable for perfect support, whether you want to lay flat for a total rest, read, watch a screen or converse with those around you.



Control.

The Stressless® Mike and Max have four built in motors operating the headrest, lumbar + back and footrest to ensure a perfect individual fit. The functions are operated with the integrated control panel in the right armrest.

Stressless® introduces a new upgraded Stressless® Plus™-system. By pushing only one button, the user can find the predefined “TV” and “sleep” position. Like the Original Stressless® Plus™-system the headrest moves forward, and the lumbar support retracts when reclining. In the upgraded plus system the footrest is also introduced to the synchronized movement.

The full potential of the chair is reached with only one button. Push continuously on the backward arrow and the synchronized movement starts. The chair reclines and the footrest rise to bring you into a relaxed active position with your head.

If you want a total relaxed position for a little nap and recharging, simply push the button again and reach the point of total relaxation. Simple!



HOME button takes you back to an upright position in one movement.

HEAD adjust the headrest back and forth in the desired position.

BACK adjusts the angle of the back support.

FOOT activates the footrest for leg.

Innovative patented systems.

Stressless® Mike and Max bring together the best sourcing from around the world to produce this innovative product. Industry leading mechanisms, electronics and manufacturing techniques create a unique platform that combine superb Stressless® comfort with a compact, efficient function – in the first-of-its-kind glider recliner on the market. The combination of a pedestal-mounted mechanism with a tri-fold footrest allows for a lighter, more “airy” expression with a much larger range of motion compared to others on the market.

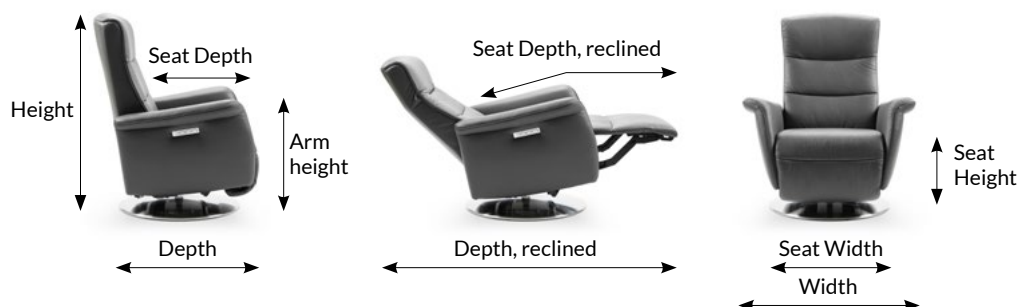


1. The headrest support is automatically synchronized with the lumbar support when the back is reclined. It can also be individually adjusted.
2. The ergonomic back and seat frame in solid construction steel have convex curved springs – covered in foam with ComfortZones™ for an extra supple and comfortable core. Added to this is a generous extra layer of foam and fiber for instant, outstanding comfort.
3. The rotation points for headrest and lumbar support are individually positioned for each size for optimum ergonomic adaptation.
4. Proper gap between seat and backrest ensures full contact with the back in all positions.
5. The outward angled armrests are made of laminated beech and solid wood, covered in foam and fiber. The shape and height offers good support for the arms and a spacious fit for the body.
6. The rocking movement is created by front and rear swing links with sealed precision ball bearings installed on each end of the swing. A specially designed feature locks the glide motion as the footrest opens.
7. The integrated footrest has a slim and neatly profiled mechanism that provides excellent, personalized support regardless of leg length.
8. 360 degree swivel. The circular Moon base is available in brushed stainless steel or in laminated beech, stained in one of our 8 Stressless® colors.

Right size matters.

Optimal comfort is also about correct size. Stressless® Mike and Max both come in 3 sizes for the perfect fit. In addition the swivel base is offered in four heights for the perfect fit (S, M, L, XL).

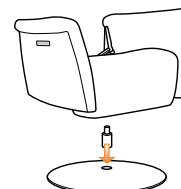
Try the chair to find your size



	Stressless® Mike			Stressless® Max		
						
Dimension in inches	S	M	L	S	M	L
Height	41.7	43.3	45.3	41.7	43.3	45.3
Depth	35	35.4	35.8	36.2	36.6	37
Arm Height	25.6	26.4	27.2	25.2	26	26.8
Depht reclined	67.7	68.5	69.7	68.9	69.7	70.5
Seat Depht	21.3	21.3	21.3	21.3	21.3	21.3
Seat Depht reclined	40.6	40.6	40.6	40.6	40.6	40.6
Seat high	18.1	18.9	19.7	18.1	18.9	19.7
Seat width	18.7 / 20.7	20.7 / 22.6	22.6 / 24.6	18.5 / 20.1	20.5 / 22	22.4 / 24
Widht	34.3	36.2	38.2	33.5	35.4	37.4
Weight (lbs)	123.48	127.89	132.3	130.095	132.3	136.71
Optional seat height						
Swivel S	Standard	18.1	18	Standard	18.1	18.1
Swivel M	18.9	Standrad	18.9	18.9	Standard	18.9
Swivel L	19.7	19.7	Standard	19.7	19.7	Standard
Swivel XL	20.5	20.5	20.5	20.5	20.5	20.5

Small, Medium and Large chairs comes in different seat heights (see table)

If you prefer another seat height you can order an extra swivel in your preferred seat height and easily adjust any size of the chair with the seat height of either Small, Medium, Large or Extra Large.



Design your Favorite.

Stressless® Mike and Max are made to order and can be customized to your personal taste. Choose between our 9 options on the base and 32 different leather covers for your personal customized relaxer.

BASE

The 360 degree swivel base comes in either a metal or a wood finish to make it easy to match any interior style. The metal base is made of brushed steel that gives a toned down modern look. The wood base is made from strong, laminated beech, available in a large range of colors. Beech is a natural and lively material with individual pattern that makes each piece unique. As a natural and renewable resource, subtle variations in pattern and color make each piece unique. As well as being attractive, beech makes our furniture extremely durable.

PIONEER is a luxurious full grain aniline pull-up leather. This exclusive and delicate quality retains the full original grain of the leather, and is treated with oils, waxes and transparent dyes. This enhances the soft touch and natural appeal, offering deep, vibrant colors and a beautiful luster. The full-bodied leather sensation and natural transparent look will gain patina and become even more beautiful with age. Pioneer absorbs moisture easily and is vulnerable to heat, sunlight, spills and perspiration. Regular care and precautions are important to keep the luxurious and elegant appearance.

PALOMA is a slightly corrected leather with a combination of dyes and pigments that smoothes some of the leather's structure (grain pattern). However, the grain structure of Paloma may vary slightly on some parts of the furniture, and minor color nuances may also occur. Natural marks, scars and insect bites remain and will appear in Paloma. A thin coat of lacquer gives Paloma some protection and simplifies cleaning.

Moon steel base



Stainless brushed steel

Moon wood base



Whitewash



Oak



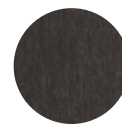
Teak



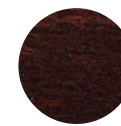
Brown



Walnut



Grey



Wenge



Black

PIONEER



Cognac



Olive Brown



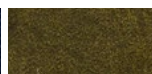
Red



Dark brown



Blue



Green



Grey

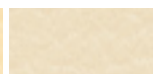


Black

PALOMA



Vanilla



Light Grey



Almond



Henna



Cherry



Purple Plum



Metal Grey



Sparrow Blue



Crystal Blue



Beige



Fog



Taupe



New Cognac



Maroon



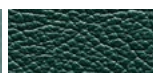
Oxford Blue



Rock



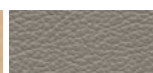
Aqua Blue



Dark Green



Sand



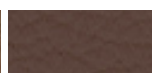
Silver Grey



Copper



Funghi



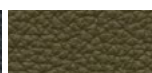
Chestnut



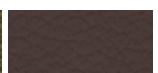
Black



Shadow Blue



Dark Olive



Chocolate

IT'S TIME FOR
Stressless[®]



stressless.com



Download: [Stressless@home](#) app